



**energomontaż  
północ GDYNIA**

---

**GRUPA POLIMEX-MOSTOSTAL**

**Technological potential  
within the scope of prefabrication  
of large steel structures for offshore and power industry**

# Energomontaż-Pólnoc Gdynia Ltd.

## Location and production facilities

### Production facilities :

- Production halls with the total area of 10,164 sq.mtr.,
- Technological line of corrosion protection,
- Equipment for gas and plasma cutting of plates,
- 3,867sq.mtr.of roofed storage area,
- Capability for road transportation of structural items with the maximum width of 10 mtr. and of the weight up to 40 tons,
- Capability for on-the-wharf assembly of large size structural blocks with the weight up to 4,000 tons.



# Energomontaz-Polnoc Gdynia Ltd.

## Wharf – assembly of large size structures

- Total area of assembly site – 43,969 sq.mtr., where abt. 30,000 sq.mtr. thereof allows for the assembly and erection of large size steel structures,
- 350 mtr. of the wharf,
- A drydock with the dimensions 240 x 40 mtr.,
- Right for useage of a harbour bassin,
- Gantry crane with the lifting capacity up to 500 tons, and with the 41 mtr. height up to the hook .
- Harbour cranes with the lifting capacity 20 and 80 tons,
- Admissible loads capacity of the assembly yard :15 – 20 tons/sq.mtr.



# Energomontaż-Pólnoc Gdynia Ltd.

## Company activity scope

Prefabrication of large size steel constructions for:

- Oil & gas sector (offshore and onshore),
- Power industry including nuclear energy,
- Renewable energy including offshore wind farms,
- Chemical & petrochemical industry,
- Harbours, shipbuilding and ship repair industry.



# Energomontaz-Polnoc Gdynia Ltd.

## Transportation capability

- The close proximity of the workshop allows for pre-fabrication of structural components with the weight up to 40 tons, and then for their road transportation to the assembly site.
- Location of the assembly site on a wharf allows for the loading and transportation of the large size structural blocks with the sea transportation means.



# Energomontaz-Pólnoc Gdynia Ltd.

## Wharf – loading facilities

- Cranes with lifting capacities of 80, 40 and 20 tons,
- Gantry crane (passing over the drydock and over the assembly yard) with the lifting capacity up to 500 tons,
- Floating crane with the lifting capacity up to 300 tons available upon request,
- Hydraulic skidding onto the transportation barges of structures with the weight up to 4,000 tons.



# Energomontaz-Polnoc Gdynia Ltd.

## Large dimensional steel structures for oil and gas sektor

- Fabrication and assembly of sections and modules for H6e Drilling Rigs Alfa & Beta (presenty Aker Spitsbergen and Aker Barents)
- Total weight of steel structures: 4,500 tons
- Contractual partner: Aker Kvaerner Stord AS, Norway



# Energomontaz-Pólnoc Gdynia Ltd.

## Large dimensional steel structures for oil and gas sector

- Fabrication and assembly of sections for GJOA Semi Platform.
- Total weight of steel structures: 2,700 tons
- Contractual partner: Aker Solutions AS, Norway

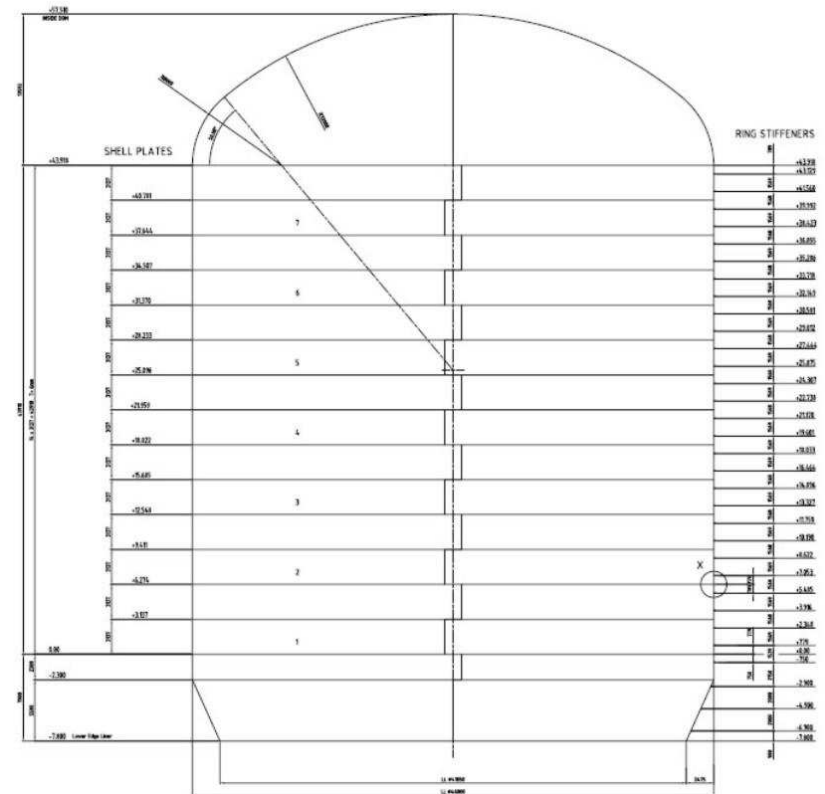




# Energomontaż-Pólnoc Gdynia Ltd.

## Fabrication of Steel Containment Liner for Olkiluoto Nuclear Power Plant

- Fabrication of Steel Containment Liner for an EPR Nuclear Power Plant in Olkiluoto, Finland.
- Dimensions: diameter 46m, height 65m
- Weight: ca. 880 ton
- Destination: Olkiluoto, Finlandia
- Contractual Partner: Babcock Noell GmbH
- Main Contractor: AREVA



Source: AREVA



# Energomontaż-Północ Gdynia Ltd.

## Fabrication of Steel Containment Liner for Olkiluoto Nuclear Power Plant

- Fabrication and assembly of a bottom of the liner in two sections.
- Loading of bottom of the liner on a pontoon





# Energomontaż-Północ Gdynia Ltd.

## Fabrication of Steel Containment Liner for Olkiluoto Nuclear Power Plant

- Assembly of a cylindrical section of the liner. Each cylinder has been assembled out of four sections.
- Loading of cylindrical sections





# Energomontaż-Północ Gdynia Ltd.

## Fabrication of Steel Containment Liner for Olkiluoto Nuclear Power Plant

- Loading of the Dome on a pontoon by skidding.
- Dimensions of the Dome:
  - height 14m,
  - diameter 46m,
  - weight 220 ton.



# Energomontaż-Pólnoc Gdynia Ltd.

## Steel structure for offshore wind farms

- Fabrication of transformer platform for offshore Rødsand Wind Farm (DK)
- Weight: 350 tons
- Contractual Partner: Bladt A/S



# Energomontaż-Polnoc Gdynia Ltd.

## Steel structure for offshore wind farms

- Fabrication of two substation topsides for Walney Offshore Wind Farm (UK)
- Weight: 1,300 tons
- Contractual partner: Bladt A/S



# Energomontaż-Północ Gdynia Ltd.

## Steel structure for offshore wind farms

- Fabrication of transition piece fastening elements - groutskirts for London Array Offshore Wind Farm (UK)
- Total weight: 2,560 tons
- Contractual partner: Bladt A/S



# Energomontaz-Polnoc Gdynia Ltd.

## Project Management

Company has implemented procedure "Project Management" to ensure that project will be done:

- accordingly to Customer satisfaction,
- in accordance with budget,
- in accordance with time schedule,
- with risk assessment and developing and plan for any preventive action,
- with implementation of the conclusions and experiences from previous projects,



# Energomontaż-Północ Gdynia Ltd.

## Project Management

- Main aspects of „Project Management” procedure:
  - appointment of Project Manager,
  - planning of project realisation,
  - startup meeting,
  - budget management,
  - management of documentation,
  - management of deliveries,
  - monitoring of project realisation,
  - QA Management,
  - risk Management,
  - assessment of subcontractors,
  - financial overview of the project,
  - closing a project: summary, lessons learned.



# Energomontaż-Północ Gdynia Ltd.

## Project Management – documentation

- Company has implemented and maintains Integrated Management System in compliance with EN ISO 9001:2008, EN ISO 14001:2004 and PN-N-18001:2004.
- Procedures & instructions.
- QA Policy.
- Customer orientation.
- Internal procedures for documentation management, for ensure using approved and valid documentation.



# Energomontaż-Pólnoc Gdynia Ltd.

## Project Management – Safety First

Company implemented and maintains Occupational Health and Safety Management System in compliance with OHSAS 18001:2007.

- HSE Policy
- Integrated Management System Manual
- HSE Programme (Project Specific)
- Evacuation Plan
- Management HSE Inspection Plan
- HSE Competition - regulations for granting HSE bonuses
- Project Specific HSE Activity Plan
- Project Specific HSE Activity Plan Construction and Assembly
- Daily report and HSE tool box talk
- Near Miss Report
- Safety accidents statistics
- HSE Chart – Number of LTI per milion manhours worked



# Investments for the period 2011-2012

## Enlargement of technological capacities and reaching the new markets

**Energomontaż-Polnoc Gdynia Ltd.** is running at present the investment process, comprising of:

- construction of a production hall (abt. 2,400 sq.mtr.),
- Installation inside the production hall of two gantry cranes with the lifting capacity of 60 tons each,
- Installation of a turning and boring lathe FKD 60/ 80Y, CNC machining center with the following machining parameters:
  - turning diameter up to 12 mtr.,
  - height of the object up to 5 mtr.,
  - table load capacity up to 120 tons.





# Investments for the period 2011-2012

## Enlargement of technological capacities and reaching the new markets

- Drilling, boring and milling machine FLF16, CNC :  
travel alongside the X axis = 16 mtr.  
travel alongside the Y axis = 4.5 mtr.  
travel alongside the Z axis = 2 mtr.,
- Rolls for cold rolling of plates with the thickness up to 160 mm,
- High efficiency welding automates.



# Investments for the period 2011-2012

## Enlargement of technological capacities and reaching the new markets

### Energomontaz-Polnoc Gdynia Ltd. new production possibilities:

- Elements for offshore wind farms with machined components f.e. *transition piece* , *pile clusters* ,
- large size machined and completely outfitted structures for oil & gas sector, inclusive FPSO & LNG FPSO,
- onshore and offshore crane appliances,
- subsea structures for oil and gas sector inclusive pressure testing,
- large size structures for chemical industry (among others - process columns),
- increase in production and assembly manpower up to 120,000 manhours per month.





**energomontaż  
północ Gdynia**

**GRUPA POLIMEX-MOSTOSTAL**

**Thank you for your attention**

**Energomontaz-Polnoc Gdynia Ltd.  
81-038 Gdynia  
Handlowa 19  
Poland**

**Tel. 00 48 58 667 32 81**

**Fax: 00 48 58 623 71 18**

**e-mail: [energomontaz@energomontaz-polnoc.com.pl](mailto:energomontaz@energomontaz-polnoc.com.pl)**

**[www.energomontaz-polnoc.com.pl](http://www.energomontaz-polnoc.com.pl)**